

# Native File Collect Overview

Native File collect is the most comprehensive yet simple to use data collection tool available on the market today. With a wizard based workflow and customizable configuration files the platform is a tool of choice for users with both advanced technical and non technical skill sets.

Some features include:

- Run directly from a USB device
- Forensically sound data collection
- Export collected native files to alternate storage
- Wizard based workflow
- Native File Collection preserving meta data
- Capability to re-enter existing collection
- No training required
- Drastically reduces the amount of data collected
- Index based search and multiple filter options



## Native File Collect Compared To The Competition

Function	Native File Collect	Competition
Objective file culling (see file types vs. assume file types present)	✓	✗
Index and search at time of collection	✓	✗
Apply date filters at time of collection	✓	✗
Easy to use and an affordable simple cost structure	✓	✗
Replicate exact file structure on export	✓	✗
Visual inspection of the collection process performed (No Black Box Magic)	✓	✗

## Automated Scan Criteria And Elimination Of Known File Types By Folder

Native File collect employs the use of MD5 hash value for excluding known file types (AKA De-Nisting) as well as user defined configuration files that allow for the further automated removal of defined file types based on user selection. File level de-duplication is an option and can be performed at the point of collection. A display of a folder tree enables selection of specific folders allowing for a more targeted collection saving time and expense.

- Automated elimination of known files by MD5
- Configuration files for file types can be updated
- Create templates for consistent collections
- Exclude system files automatically

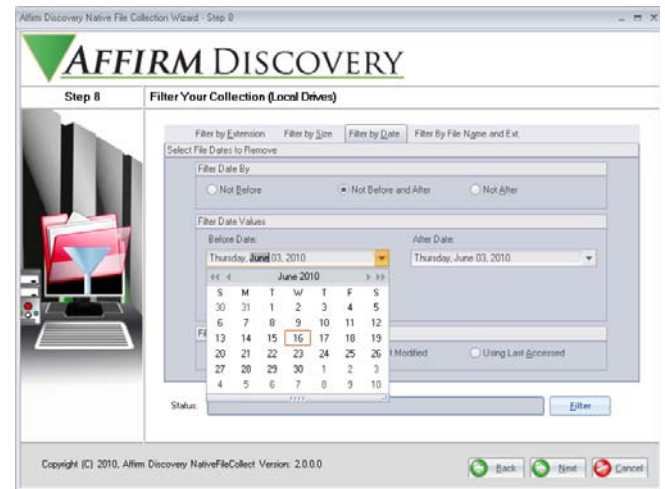


- Exclude hidden files if desired
- Exclude files with no extensions if desired
- View internal file structure of ZIP files
- Eliminate duplicate files
- Next and Back buttons allow for back ward and forward mobility to adjust collection criteria on the fly

## Index Based Search And Filter Options At Point Of Collection

Native File collect allows for multiple data culling options at the point of collection including by File Type, By Date (exclude before, after or both combined), By Size and by File Name (begins with, end with or contains). An option to index identified files enables the application of keyword and phrase based searching. Files that are unable to be indexed for searching are identified and indicated by a graphical icon for further user action if desired.

- Eliminate additional files by extension
- Eliminate files by date
- Eliminate files by name
- Eliminate files by size



- Icon indicators for documents that are not indexed
- Icon indicators for items in display that contain search criteria
- Add, Import and reuse search criteria
- Eliminate items that do not contain search criteria
- View file tree in single file or folder mode

## Export The Collection and Move On To The Next

Native File collect allows for multiple export options for the data that has been identified for collection. The identified files can be exported to separate media in a numbered folder structure or can replicate the original folder structure. The export process maintains all original meta-data and content of the files. Additional export modules allow for the export of collected data in a format ready to load into all popular litigation support review platforms as well as the standalone Native File Review platform. Modules for additional file interpretation and export functionality are offered separately.

- Direct output to specific location
- Export only what you want
- Maintain original folder structure
- No alteration of meta-data or content



- Identify, collect and export relevant data in 10 steps or less



For additional information, please visit our website at [www.affirmdiscovery.com](http://www.affirmdiscovery.com) or contact us via email at [sales@affirmdiscovery.com](mailto:sales@affirmdiscovery.com)